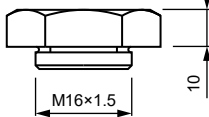
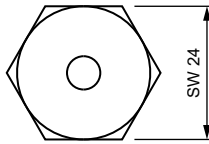
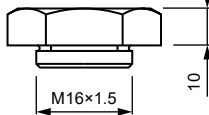
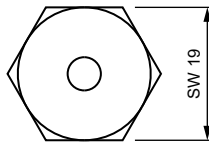


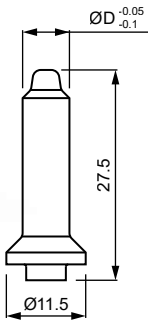
DOCERAM
ADVANCED CERAMIC SOLUTIONS



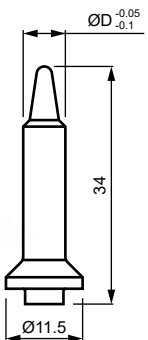
Cerazur



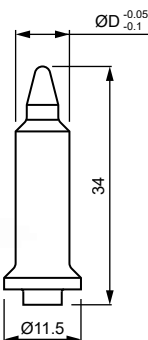
RÖVID



HOSSZÚ



GALLÉROS



CSERÉLHETŐ ELEKTRODÁK

LEMEZ FURAT ØD	SW 19	SW 24
6.5	1111-ZK-10031	1111-ZK-10078
6.6	1111-ZK-10032	1111-ZK-10079
6.7	1111-ZK-10033	1111-ZK-10080
6.8	1111-ZK-10034	1111-ZK-10081
6.9	1111-ZK-10035	1111-ZK-10082
7.0	1111-ZK-10036	1111-ZK-10083
7.1	1111-ZK-10037	1111-ZK-10084
7.2	1111-ZK-10038	1111-ZK-10085
7.3	1111-ZK-10039	1111-ZK-10086
7.4	1111-ZK-10040	1111-ZK-10087
7.5	1111-ZK-10041	1111-ZK-10088
7.6	1111-ZK-10042	1111-ZK-10089
7.7	1111-ZK-10043	1111-ZK-10090

LEMEZ FURAT ØD	SW 19	SW 24
7.8	1111-ZK-10044	1111-ZK-10091
7.9	1111-ZK-10045	1111-ZK-10092
8.0	1111-ZK-10046	1111-ZK-10093
8.1	1111-ZK-10047	1111-ZK-10094
8.2	1111-ZK-10048	1111-ZK-10095
8.3	1111-ZK-10049	1111-ZK-10096
8.4	1111-ZK-10050	1111-ZK-10097
8.5	1111-ZK-10051	1111-ZK-10098
8.6	1111-ZK-10052	1111-ZK-10099
8.7	1111-ZK-10053	1111-ZK-10100
8.8	1111-ZK-10054	1111-ZK-10101
8.9	1111-ZK-10055	1111-ZK-10102
9.0	1111-ZK-10056	1111-ZK-10103

CERAZUR KERÁMIA TÁJOLÓCSAPOK

LEMEZ FURAT ØD	RÖVID	HOSSZÚ	GALLÉROS
6.5	8228-ZK-11032	8228-ZK-10032	8228-ZK-10332
6.6	8228-ZK-11033	8228-ZK-10033	8228-ZK-10333
6.7	8228-ZK-11034	8228-ZK-10034	8228-ZK-10334
6.8	8228-ZK-11035	8228-ZK-10035	8228-ZK-10335
6.9	8228-ZK-11036	8228-ZK-10036	8228-ZK-10336
7.0	8228-ZK-11037	8228-ZK-10037	8228-ZK-10337
7.1	8228-ZK-11038	8228-ZK-10038	8228-ZK-10338
7.2	8228-ZK-11039	8228-ZK-10039	8228-ZK-10339
7.3	8228-ZK-11040	8228-ZK-10040	8228-ZK-10340
7.4	8228-ZK-11041	8228-ZK-10041	8228-ZK-10341
7.5	8228-ZK-11042	8228-ZK-10042	8228-ZK-10342
7.6	8228-ZK-11043	8228-ZK-10043	8228-ZK-10343
7.7	8228-ZK-11044	8228-ZK-10044	8228-ZK-10344
7.8	8228-ZK-11045	8228-ZK-10045	8228-ZK-10345
7.9	8228-ZK-11046	8228-ZK-10046	8228-ZK-10346
8.0	8228-ZK-11047	8228-ZK-10047	8228-ZK-10347
8.1	8228-ZK-11048	8228-ZK-10048	8228-ZK-10348
8.2	8228-ZK-11049	8228-ZK-10049	8228-ZK-10349
8.3	8228-ZK-11050	8228-ZK-10050	8228-ZK-10350
8.4	8228-ZK-11051	8228-ZK-10051	8228-ZK-10351
8.5	8228-ZK-11052	8228-ZK-10052	8228-ZK-10352



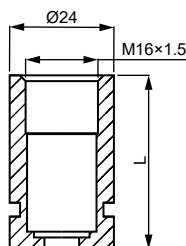
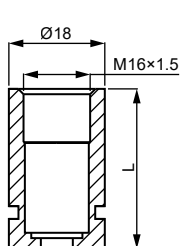
Megrendelésre Volcera anyagból készült tájolócsapokat is szállítunk.

Termékkód: „8440-ZK-xxxxx” (az „xxxxx” a táblázatban szereplő termékek utolsó öt számával azonos, pl. Ø6.5-nél a kód 8440-ZK-11032)

M6 CSAVARANYA HEGESZTŐ ÖSSZEÁLLÍTÁS LÉGHŰTÉSŰ

Pro
Spot

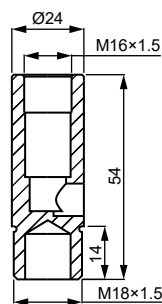
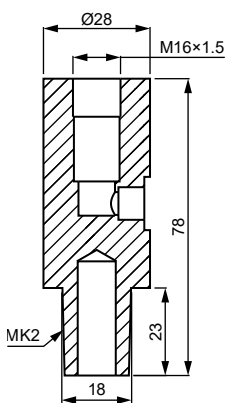
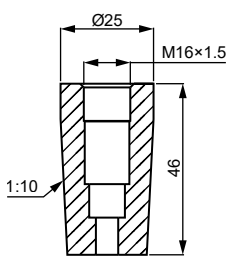
ELEKTRÓDATARTÓK



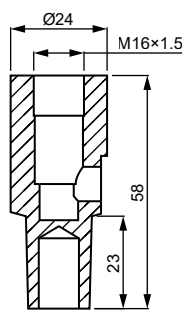
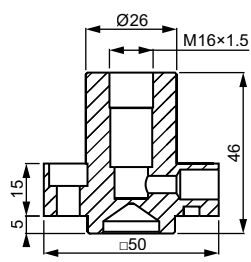
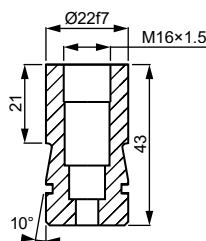
L	Ø18	Ø24
30	1111-ZK-10503	1111-ZK-10509
40	1111-ZK-10504	1111-ZK-10510
50	1111-ZK-10505	1111-ZK-10511



ADVANCED CERAMIC SOLUTIONS
DOCERAM[®]



1:10 KÚP	MK2 KÚP	M18x1.5 MENET
1111-ZK-10581	1111-ZK-10541	1111-ZK-10561



S-TÍPUS	R-TÍPUS	T-TÍPUS
1111-ZK-10681	1111-ZK-10611	1111-ZK-10641



CSERÉLHETŐ
ELEKTRÓDA



TÁJOLÓCSAP



RUGÓ



ELEKTRÓDA
TARTÓ



GYORS-
CSATLAKOZÓ
SŰRÍTETT
LEVEGŐRE

TARTOZÉKOK ELEKTRÓDATARTÓKHOZ

RUGÓ



TARTÓ HOSSZ	MEGJELÖLÉS
30 mm-ig	1112-ZK-12205
40 mm-tól	1112-ZK-12206

O-GYŰRŰ



TARTÓ TÍPUS	MEGJELÖLÉS
Ø18	1123-ZK-16434
Ø24	1123-ZK-16435
S-típus	1123-ZK-58440

GYORSCSATLAKOZÓ



—	MEGJELÖLÉS
sűrített levegő bevezető G1/8"-Ø6	1116-ZK-12353