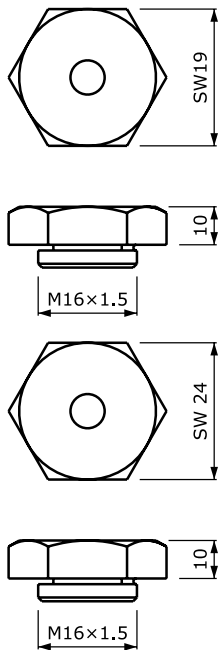


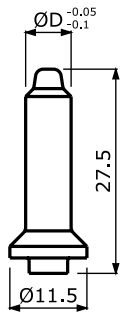
DOCERAM
ADVANCED CERAMIC SOLUTIONS



CSERÉLHETŐ ELEKTRODÁK

| LEMEZ FURAT ØD | SW 19 | SW 24 | LEMEZ FURAT ØD | SW 19 | SW 24 |
|----------------|---------------|---------------|----------------|---------------|---------------|
| 6.5 | 1111-ZK-10031 | 1111-ZK-10078 | 7.8 | 1111-ZK-10044 | 1111-ZK-10091 |
| 6.6 | 1111-ZK-10032 | 1111-ZK-10079 | 7.9 | 1111-ZK-10045 | 1111-ZK-10092 |
| 6.7 | 1111-ZK-10033 | 1111-ZK-10080 | 8.0 | 1111-ZK-10046 | 1111-ZK-10093 |
| 6.8 | 1111-ZK-10034 | 1111-ZK-10081 | 8.1 | 1111-ZK-10047 | 1111-ZK-10094 |
| 6.9 | 1111-ZK-10035 | 1111-ZK-10082 | 8.2 | 1111-ZK-10048 | 1111-ZK-10095 |
| 7.0 | 1111-ZK-10036 | 1111-ZK-10083 | 8.3 | 1111-ZK-10049 | 1111-ZK-10096 |
| 7.1 | 1111-ZK-10037 | 1111-ZK-10084 | 8.4 | 1111-ZK-10050 | 1111-ZK-10097 |
| 7.2 | 1111-ZK-10038 | 1111-ZK-10085 | 8.5 | 1111-ZK-10051 | 1111-ZK-10098 |
| 7.3 | 1111-ZK-10039 | 1111-ZK-10086 | 8.6 | 1111-ZK-10052 | 1111-ZK-10099 |
| 7.4 | 1111-ZK-10040 | 1111-ZK-10087 | 8.7 | 1111-ZK-10053 | 1111-ZK-10100 |
| 7.5 | 1111-ZK-10041 | 1111-ZK-10088 | 8.8 | 1111-ZK-10054 | 1111-ZK-10101 |
| 7.6 | 1111-ZK-10042 | 1111-ZK-10089 | 8.9 | 1111-ZK-10055 | 1111-ZK-10102 |
| 7.7 | 1111-ZK-10043 | 1111-ZK-10090 | 9.0 | 1111-ZK-10056 | 1111-ZK-10103 |

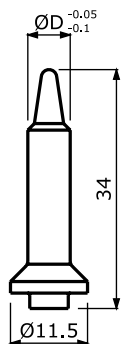
RÖVID



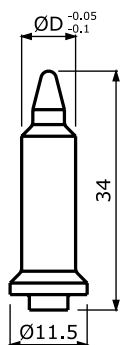
CERAZUR KERÁMIA TÁJOLÓCSAPOK

| LEMEZ FURAT ØD | RÖVID | HOSSZÚ | GALLÉROS |
|----------------|---------------|---------------|---------------|
| 6.5 | 8228-ZK-11032 | 8228-ZK-10032 | 8228-ZK-10332 |
| 6.6 | 8228-ZK-11033 | 8228-ZK-10033 | 8228-ZK-10333 |
| 6.7 | 8228-ZK-11034 | 8228-ZK-10034 | 8228-ZK-10334 |
| 6.8 | 8228-ZK-11035 | 8228-ZK-10035 | 8228-ZK-10335 |
| 6.9 | 8228-ZK-11036 | 8228-ZK-10036 | 8228-ZK-10336 |
| 7.0 | 8228-ZK-11037 | 8228-ZK-10037 | 8228-ZK-10337 |
| 7.1 | 8228-ZK-11038 | 8228-ZK-10038 | 8228-ZK-10338 |
| 7.2 | 8228-ZK-11039 | 8228-ZK-10039 | 8228-ZK-10339 |
| 7.3 | 8228-ZK-11040 | 8228-ZK-10040 | 8228-ZK-10340 |
| 7.4 | 8228-ZK-11041 | 8228-ZK-10041 | 8228-ZK-10341 |
| 7.5 | 8228-ZK-11042 | 8228-ZK-10042 | 8228-ZK-10342 |
| 7.6 | 8228-ZK-11043 | 8228-ZK-10043 | 8228-ZK-10343 |
| 7.7 | 8228-ZK-11044 | 8228-ZK-10044 | 8228-ZK-10344 |
| 7.8 | 8228-ZK-11045 | 8228-ZK-10045 | 8228-ZK-10345 |
| 7.9 | 8228-ZK-11046 | 8228-ZK-10046 | 8228-ZK-10346 |
| 8.0 | 8228-ZK-11047 | 8228-ZK-10047 | 8228-ZK-10347 |
| 8.1 | 8228-ZK-11048 | 8228-ZK-10048 | 8228-ZK-10348 |
| 8.2 | 8228-ZK-11049 | 8228-ZK-10049 | 8228-ZK-10349 |
| 8.3 | 8228-ZK-11050 | 8228-ZK-10050 | 8228-ZK-10350 |
| 8.4 | 8228-ZK-11051 | 8228-ZK-10051 | 8228-ZK-10351 |
| 8.5 | 8228-ZK-11052 | 8228-ZK-10052 | 8228-ZK-10352 |

HOSSZÚ



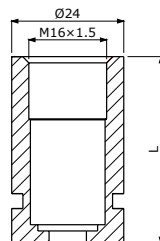
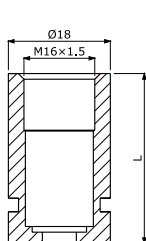
GALLÉROS



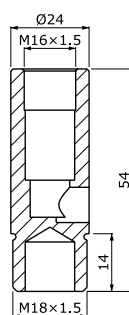
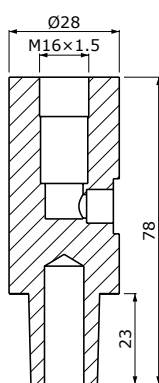
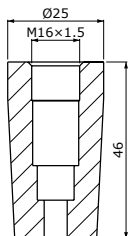
Volcera

Megrendelésre Volcera anyagból készült tájolócsapokat is szállítunk.
Termékkód: „8440-ZK-xxxxx” (az „xxxxx” a táblázatban szereplő
termékek utolsó öt számával azonos, pl. Ø6.5-nél a kód 8440-ZK-11032)

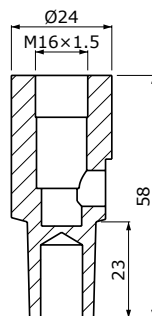
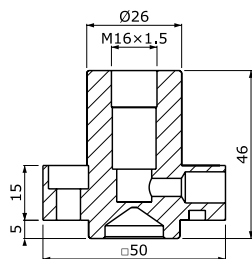
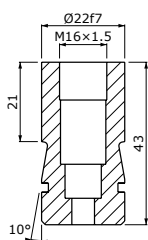
ELEKTRÓDATARTÓK



| L | Ø18 | Ø24 |
|----|---------------|---------------|
| 30 | 1111-ZK-10503 | 1111-ZK-10509 |
| 40 | 1111-ZK-10504 | 1111-ZK-10510 |
| 50 | 1111-ZK-10505 | 1111-ZK-10511 |

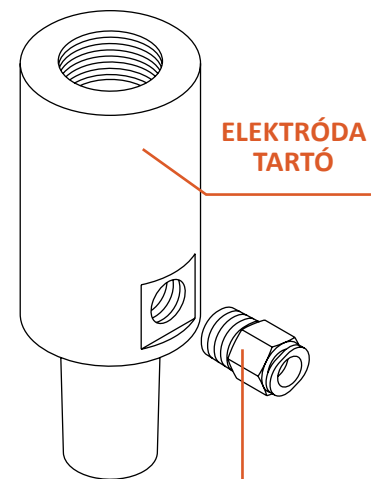
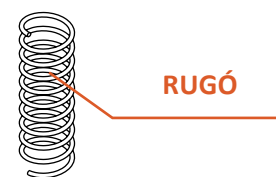
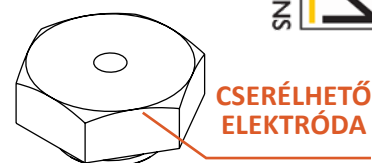


| 1:10 KÚP | MK2 KÚP | M18x1.5 MENET |
|---------------|---------------|---------------|
| 1111-ZK-10581 | 1111-ZK-10541 | 1111-ZK-10561 |



| S-TÍPUS | R-TÍPUS | T-TÍPUS |
|---------------|---------------|---------------|
| 1111-ZK-10681 | 1111-ZK-10611 | 1111-ZK-10641 |

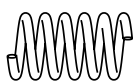
ADVANCED CERAMIC SOLUTIONS
DOCERAM[®]



GYORSCSATLAKOZÓ
SŰRÍTETT LEVEGŐRE

TARTOZÉKOK ELEKTRÓDATARTÓKHOZ

RUGÓ



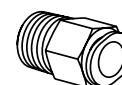
| TARTÓ HOSSZ | MEGJELÖLÉS |
|-------------|---------------|
| 30 mm-ig | 1112-ZK-12205 |
| 40 mm-tól | 1112-ZK-12206 |

O-GYŰRŰ



| TARTÓ TÍPUS | MEGJELÖLÉS |
|-------------|---------------|
| Ø18 | 1123-ZK-16434 |
| Ø24 | 1123-ZK-16435 |
| S-típus | 1123-ZK-58440 |

GYORSCSATLAKOZÓ



| — | MEGJELÖLÉS |
|-----------------------------------|---------------|
| sűrített levegő bevezető G1/8"-Ø6 | 1116-ZK-12353 |